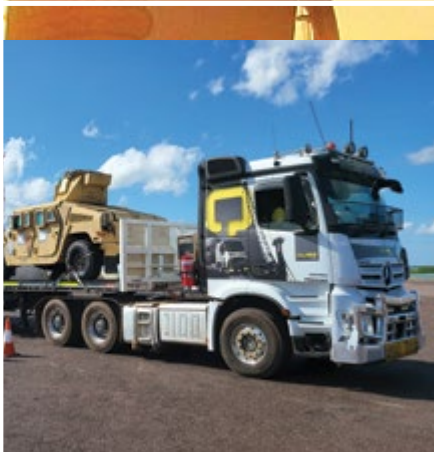


QUBE

QUBE GOVERNMENT SERVICES Capability Statement



ZERO HARM



Qube's vision is "To be the leading provider of integrated logistics solutions focussed on import, export and domestic supply chains in Australia, New Zealand and South East Asia".

About Qube

Qube is Australia's largest integrated provider of import and export logistics services with national operations that provide a broad range of services.

The Ports division has diversified operations from Dampier in the west, where we operate stevedore operations and provide O&G supply base services, through to Port Kembla and New Zealand in the east, where we handle motor vehicles, heavy machinery, project cargoes and forestry cargoes, and across the Asian market in countries such as Singapore, Indonesia, Vietnam and Papua New Guinea.

The Bulk division provides customers with the full range of bulk material handling services including road/rail transport, stockpile management and bulk/Rotabox™ ship loading, and handles more than 20 million tonnes of bulk products per annum, while the Logistics division has strategically located facilities in all capital city ports and provides road and rail container transport, customs and quarantine services, container parks, intermodal terminals, warehousing and international freight forwarding.

We pride ourselves on our best practice service delivery through our port precinct facilities, an unrivalled logistical network, and infrastructure assets that are complimented through the application of innovative technology solutions.

Qube's key business strength and competitive advantage is that we own and operate the infrastructure that enables Qube to design, implement and manage fully integrated supply chain solutions which provide our customers with flexibility, reliability and cost competitiveness.

Our culture is based around flexibility, and responsiveness to our clients' needs. We employ the best people in our industry, with a breadth of knowledge across multiple facets of the supply chain. Qube has an excellent reputation and proven track record in providing innovative, cost effective solutions to our clients, focusing on reliability and safety as our number one priority.

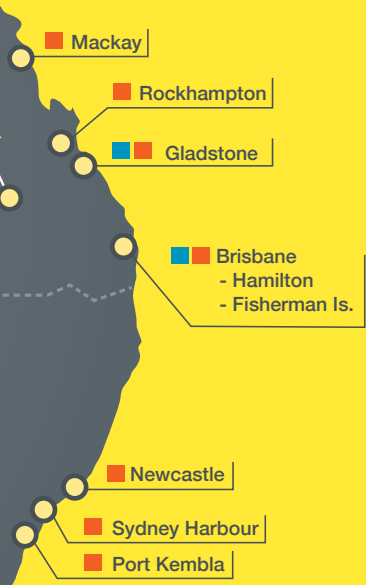
With operations in over 150 facility locations around Australia, New Zealand and South East Asia, we offer stevedoring services, supply base functions, and the full suite of operational support services, including logistics support, local and interstate transport, labour hire, equipment supply, material management and inventory control.

A key competitive strength of Qube's businesses is the ability to offer customers a comprehensive logistics supply chain solution. This is possible due to Qube's deliberate decision to develop capabilities across multiple aspects of the supply chain, from the port to the end-customer for both import and export products. This integrated approach enables Qube to remove inefficiencies in the logistics supply chain and provide a value-add competitive service to our customers.

Qube Operating Locations

Qube Ports is the major integrated port solutions provider in Australia, and is the specialist integrated port services provider of the Qube Group, with bulk and general handling facilities in over 50 Australian and New Zealand ports. This allows Qube Ports to lead the market in providing purpose designed solutions for our customers handling containers, bulk, automotive and general cargo.





Safety, Health and Sustainability



Qube is committed to managing our business in a safe and responsible manner. We work with our people to ensure our teams are diverse, engaged and empowered to deliver positive outcomes for our customers and the communities in which we operate. We strive to manage our business in an ethical and transparent manner ensuring that we have appropriate frameworks and systems. We are committed to ensuring our environmental footprint is monitored, assessed and minimised.

Sustainability at Qube means the safety and wellbeing of our people, caring for the planet, and managing our financial performance, productivity and economic sustainability.

As an integrated supply chain company, Qube's contribution to sustainability is also achieved by providing its customers with industry leading solutions that drive and provide efficiency, reducing the impact of customers' operations on the environment.

Qube works with the local communities in which it operates to achieve better social outcomes,

implementing a range of initiatives focusing on social responsibility, local and Indigenous employment and stakeholder engagement.

Qube embraces diversity and inclusiveness in the workplace. We rely on, and encourage, our people to contribute a diverse range of skills and experiences in order to deliver the best outcomes for our customers. We continue to strengthen our focus on recruiting strategically to increase workforce participation across a range of demographics.

Qube employees undertake formal "Safe Choices" training – an oil and gas program developed for ExxonMobil, this training provides an insight into human performance, decision making styles, fast and slow thinking and present motivation.

Sustainability Framework

The Sustainability Framework defines how sustainability is integrated across the business and sets the requirements for annual objectives, metrics and target setting.

Sustainability is linked to Qube’s business strategy because the sustainability of Qube’s activities is important to the company’s future success. Qube’s sustainability strategy is shaped by its five pillars: Safety, Wellbeing, Planet, Opportunity, Performance.



SAFETY	WELLBEING	PLANET	OPPORTUNITY	PERFORMANCE
<p>We believe our team should go home unharmed.</p> <p>‘Zero Harm’ is an aspiration we will always strive for.</p> <p>In both our physical health and mental health.</p> <p>‘Thrive’ is about helping us to look after both.</p> <p>Both matter every day. And we all have a part to play.</p> <p>Everything we do needs to be done safely.</p>	<p>We believe we all deserve to be our best.</p> <p>Good wellbeing helps us to be our best.</p> <p>‘Thrive’ helps us to nurture good wellbeing as well as safety.</p> <p>As individuals. And as a team.</p> <p>It supports who we are and what we can achieve.</p> <p>Good wellbeing sets us up for success.</p>	<p>We believe in supporting the planet that supports us all.</p> <p>We seek and seize opportunities to be more sustainable.</p> <p>These are outcomes we don’t just want to achieve.</p> <p>These are outcomes we need to achieve.</p> <p>For our future and beyond.</p> <p>Because we only have one planet.</p>	<p>We believe in opportunities for our team and customers.</p> <p>We create training and career opportunities for our team.</p> <p>To grow our people. Benefit our customers. And our business.</p> <p>We seize opportunities to innovate, improve and expand.</p> <p>To support our people. Build our customers. And our business.</p> <p>Success begins with opportunity.</p>	<p>We believe in delivering the right outcomes for all.</p> <p>Whatever the opportunity, we collaborate to create the right outcomes.</p> <p>Investing in technology and innovation sets up the right outcomes.</p> <p>Our relationships and know-how deliver the right outcomes.</p> <p>For our customers, our people, our business, our shareholders and partners.</p> <p>When we deliver, we all succeed.</p>

Qube Government Services



Qube has consolidated a range of experience and capabilities in the Qube Government Services business unit and is well positioned to provide integrated logistics and service support to the public sector.

Our focus in the public sector is:

- **Logistics Support:** Naval husbandry, transport, warehousing, container management (procurement, leasing and packing/unpacking), terminal management, and the provision of specialised equipment
- **Infrastructure Support:** Management of the design and construct functions for facilities and logistics equipment
- **Advisory:** Expert assistance in logistics support planning and implementation

Qube currently supports the Australian Antarctic Division, the Australian Border Force, and the Tasmanian Government's TT-Line.

Qube also develops and operates logistics infrastructure, including warehouses, support bases and specialist handling equipment.

“ Qube is committed to providing superior service and value for money. ”

Qube managers are experienced in providing logistics support in challenging and austere environments. This experience extends to managing:

- Naval Vessel Husbandry: supply of all port and support services to international navies
- Camp and Garrison Support: including catering, facilities management and maintenance, security and fuel supply
- Expeditionary Logistics: supporting 100 – 1,000 personnel in remote training and theatre environments
- Fuel Supply and Distribution
- Air Charter
- Land Transport
- Quarantine Cleaning
- Rapid Response Humanitarian Logistics (Disaster and Crisis Management)



Global Reach

With the acquisition of NZ stevedoring and marshalling company, ISO Limited, and its related entities (ISO), as well as a base of operations in Singapore for a new Qube entity, Qube International, Qube Government Services is ideally placed to support operations throughout the Asia Pacific region. Over the last 12 months, Qube Government Services has provided logistics support in Fiji, Vietnam, Papua New Guinea and New Zealand.



This provides the following benefits to clients:

- Value for money
- Transparency
- No margin on margin
- Reliability and consistency of culturally astute, key personnel, with an actual presence and experience in each port of call, who understand client needs.
- Capability of managing and controlling large, complex contracts
- Responsiveness to change-in requirements (commercial and operational)

Qube is an experienced logistics service provider with a proven track record in developing and delivering integrated logistics plans and programs for the public and private sectors.

Qube is committed to working collaboratively with our clients from the idea phase, through to the implementation and successful execution of the project.

With a domestic network of owned and managed assets, as well as trusted global suppliers, and a solid financial background, our transparent, low risk service delivery models will ensure that Qube continues to be the preferred, long term logistics provider.

Specialist support services include:

- Supply base functions and all services including stevedoring, labour hire, equipment supply, inventory control, etc.
- Bio-secure approved facilities and Quarantine approved wash bays
- Import into Australian waters for all vessels and barges to operate within Australian law
- Full vessel agency functions for all vessels, and barges for all port calls
- International air and sea freight forwarding
- Third party service requisitioning
- Crew changes and management
- Inventory management tailored to customer requirements
- Specialist trade services to support the operations, hot works, mechanical, etc.
- Local and interstate transport



Qube Ship Husbandry

Qube Government Services can provide transparent, low risk, sustainable services to support navy ships across the globe.



The highly experienced Qube team has successfully provided reliable, low risk integrated ship husbandry outcomes for military and civilian clients for over a decade. The Qube team has successfully supported shipping operations in over 50 countries and 200 locations around the world.

Qube's intimate understanding of regional naval and Border Protection vessel requirements, low risk commercial and operational solutions, and ability to meet planned and surge requirements make them the trusted supplier of choice to Government agencies in the region.

We are determined to fully meet client needs for reliable, low risk, value for money specialist ship husbandry services, with complete cost transparency.

Qube Government Services offers unique advantages to our clients, such as combining stevedoring with ship husbandry services and one point of contact to provide assured, flexible, tailored and integrated contingency and sustainment logistics.

As an integrated service provider, we coordinate all services from provisioning and waste management to land transportation and port services. Our team has extensive experience supporting vessels from the United States Navy, Royal Australian Navy, Royal New Zealand Navy, Indian Navy, Republic of Singapore Navy, Republic of Korea Navy and Indonesian Navy, whether whilst alongside, in transit or at anchor.

The Qube offer includes key port service agents situated throughout Australia, providing specialised on-ground support, and operations managers to provide a consistent point of contact for vessels throughout their multi-port deployments.

As a full service, vertically integrated management and logistics company, Qube Government Services has the proven capability to manage, integrate and coordinate all of the logistical support services required by any navy globally.

In addition to the cost efficiencies of a one-stop shop, Qube Government Services provides our clients with a number of tangible cost savings to ensure clients engage a contractor with complete transparency that will demonstrate value for money year on year.



Freight Forwarding and International Logistics Services

With stevedoring, logistics and terminal operations in virtually every Australian port, Qube has built a world class freight forwarding business which supports in the delivery of a truly integrated logistics service to our customers. Our domestic network is unrivalled, and our international network covers all corners of the planet, with Qube owned offices in New Zealand, Singapore, Indonesia, Thailand, Malaysia, Myanmar, China and India, and elsewhere a worldwide agency network of hand-picked specialist logisticians linked by like systems through our Asia Pacific Forwarding Alliance.



In the period since Qube's inception in 2007, the business has created a vibrant and sophisticated freight forwarding operation servicing all regions around the globe through our dedicated offices and network of agents. We have applied our many years of experience to a multitude of cargoes, not just to Australia and New Zealand, but all around the world. Whether it's an Antonov full of conveyor reels from Qingdao up to Aitik inside the frozen Arctic Circle, or a satchel of urgent PCBs from LAX to Nigeria, Qube has managed it all.



Supply Base Services



Qube offers a national network of supply base services around Australia in locations such as Perth, Dampier, Karratha, Broome, Darwin, Gladstone, Curtis Island, Surat Basin, Brisbane, Barry Beach, Geelong and Portland.

Qube also provides cargo consolidation and container packing/unpacking at off wharf warehousing and strategic linehaul hubs in Perth, Gap Ridge, the East Arm precinct in Darwin, and all major cities on the east coast. Our network of supply bases extends into Singapore, Indonesia and Malaysia, providing a truly integrated service offering to the Australian and international oil and gas market.

Some of the services our facilities offer include:

- 24/7 supply base and stevedoring services
- Shipping and customs agency
- Equipment, machinery and accessories to load/unload trucks and containers, and load and discharge marine vessels
- Provision of lifting and rigging equipment
- Supply of offshore container hire
- Materials management
- Management of dangerous goods storage
- Supply of external lay down area, materials handling and processing area and casing racks
- Supply and management of internal storage, internal materials handling/ processing area and pallet racks
- Supply base waste management services
- Provision of office space and furnishings.



Darwin Facilities and Operations

Qube has an extensive operation in Darwin which services bulk, RoRo, container, oil and gas and breakbulk vessels that call at the port. We provide a range of high quality supply base, logistics and stevedoring services at the Port of Darwin and through a range of other Northern Australian ports.



Qube Darwin Supply Base

- 36,000 square metre site
- 25,500 square metres of secure open storage laydown
- 8,000 square metres of internal warehouse and cold storage facilities, including racking
- 2,500 square metres undercover awning
- Mobile cranes to 400 tonne capacity
- Forklift capacity from 2.5 tonne to 40 tonne
- Vessel agency
- Meet and greet, crew management
- Freight forwarding and customs clearance
- Marine vessel support
- Manpower labour supply
- On site offices suitable for 60 people
- Full lighting for 24/7 operations
- Transport services with company owned trucks
- Inventory management database
- General labour hire
- Dangerous Goods store
- Trade services such as hot works, etc.
- 3rd party procurement
- CCTV security.

Qube Wharf Facilities – East Arm Wharf

- East Arm Wharf – common user multipurpose berths
- Quayline: 775m
- Depth Alongside: 13m
- Total Yard Area: 35,000 m²
- Reefer Capacity: 100 points
- Combined 35,000m² site in 3 locations on wharf operated by Qube
- Liebherr LHM 420 Mobile Harbour Crane (124T)
- Liebherr LHM 550 Mobile Harbour Crane (144T)
- LR 1160 Crawler Crane
- 2 x Kalmar Reachstackers
- 2 x SMV 16T Forklifts
- 2 x Kalmar 16T Forklifts
- 1 x Hyster 16T Forklift
- 2 x Clark 3T Forklifts
- 5 x ITV trailers, various ratings between 35T – 45T
- 3 x Docktrucks (ITVs)
- 1 x Ro-Ro Truck.



Western Australian Facilities and Operations

Qube owns and operates the Dampier Barge Facility, a custom built facility located at Dampier Cargo Wharf which also operates as an on-wharf supply base. The facility allows vessels to discharge at a safe anchorage and transfer the cargo to Qube's specialised barge for movement to the shore facility, rather than waiting on demurrage for berth access. Qube also operates Dampier Burrup Material Facility (BMF), under license from Woodside, as well as Qube's Karratha Supply Base.



Perth Supply Base

- 80,000m² of secure open storage laydown
- 20,000m² of internal warehouse storage
- Quarantine and pest management, including wash bay services
- Full logistics suite, including hot shot services
- Project/dedicated services between Perth, Karratha, Broome and Darwin
- Mobile Cranes to 400 Ton capacity
- Forklift capacity 2.5 Ton to 42 Ton
- General labour hire
- Trades services such as hot works, etc.
- 3rd party procurement
- Materials management, storage and handling
- Quarantine and pest management
- Container leasing, management and maintenance.

Broome Supply Base

- Area – 13,000m²
- Warehouse/store – 1,000m²
- Yard – 9,000m²
- General warehouse with pallet racking and large laydown for chrome storage
- Laydown yards including hardstand
- Casing racks and dunnage
- Industrial wash pad
- Hazardous material storage
- Office building with meeting room, kitchen and amenities
- Off street parking
- Secure site access.

Dampier Barge Facility

- Located at base of Dampier Cargo Wharf
- Also servicing vessels berthed at Dampier Cargo Wharf
- 10,000m² sealed hardstand – rated to 10 tons per m²
- Berth at 60 meters long, rated at 10 ton per m²
- Depth at berth 5 meters LAT
- Stevedoring services
- Mooring / unmooring services
- Mobile cranes to 750T capacity
- Forklift capacity 3T to 32T
- Reach stacker capacity to 45T
- General labour hire
- Trades services such as hot works, etc.
- 3rd party procurement
- Quarantine compliant wash bay.

Dampier BMF

- Operated under license from Woodside
- Up to 50,000m² of secure open storage laydown
- Up to 2,500m² of internal warehouse storage
- Berth length 120 meters
- Berth depth 8 meters at LAT
- Stevedoring services
- Mooring / unmooring services
- Mobile cranes to 750T capacity
- Forklift capacity 3T to 16T
- General labour hire
- Trades services such as hot works, etc.
- 3rd party procurement.

Karratha Supply Base

- 20,000m² of secure open storage laydown
- 2,500m² of internal warehouse storage
- Quarantine Wash bay services
- Range of prime mover and trailer configurations to suit including side loaders
- Project / dedicated services between Perth, Karratha, Broome and Darwin
- Hot shot services
- On site offices and amenities
- Mobile Cranes to 400T capacity
- Forklift capacity 2.5T to 32T
- General labour hire
- Trades services such as hot works, etc.
- 3rd party procurement.

Barry Beach Marine Terminal (BBMT) Facility and Operations

Located nearby to all Gippsland Basin oilfields, this is the home base for all Esso/BHP offshore field activity.



Qube has been awarded a long term contract for management and operations for Esso BBMT and has commenced operations in November 2017. With Qube operating BBMT, the facility will be operated with access rights granted to third party offshore oil and gas operators outside of Esso projects.

BBMT is the closet port location to Gippsland Basin oil fields and, at BBMT, all of the infrastructure to service offshore oil and gas projects is already present and in operation.

Berths

- Dedicated O&G Berths: 1 & 2
- Total Berth Length: 210m
- Maximum Depth Alongside LAT: 6.0m
- 505,000 litre capacity fuel tanks located on site with pipelines to vessel
- Fixed pedestal shore crane at 110 ton capacity.

Services

- Oil and gas projects – purpose built facility for offshore O&G
- Berthing priority to O&G vessels can be negotiated as the facility is a Qube managed facility
- Qube own stevedoring services
- Mud plant located on site with pipeline to vessel (Halliburton)
- Cement tanks located on site with pipelines to vessels
- Fresh water pipelines to vessels
- DG warehouse
- Client offices on site
- Bulk materials handling
- Break bulk handling
- Project cargo
- Storage
- Wash facilities
- Cargo tracking
- Electronic messaging (EDI and B2B communications).

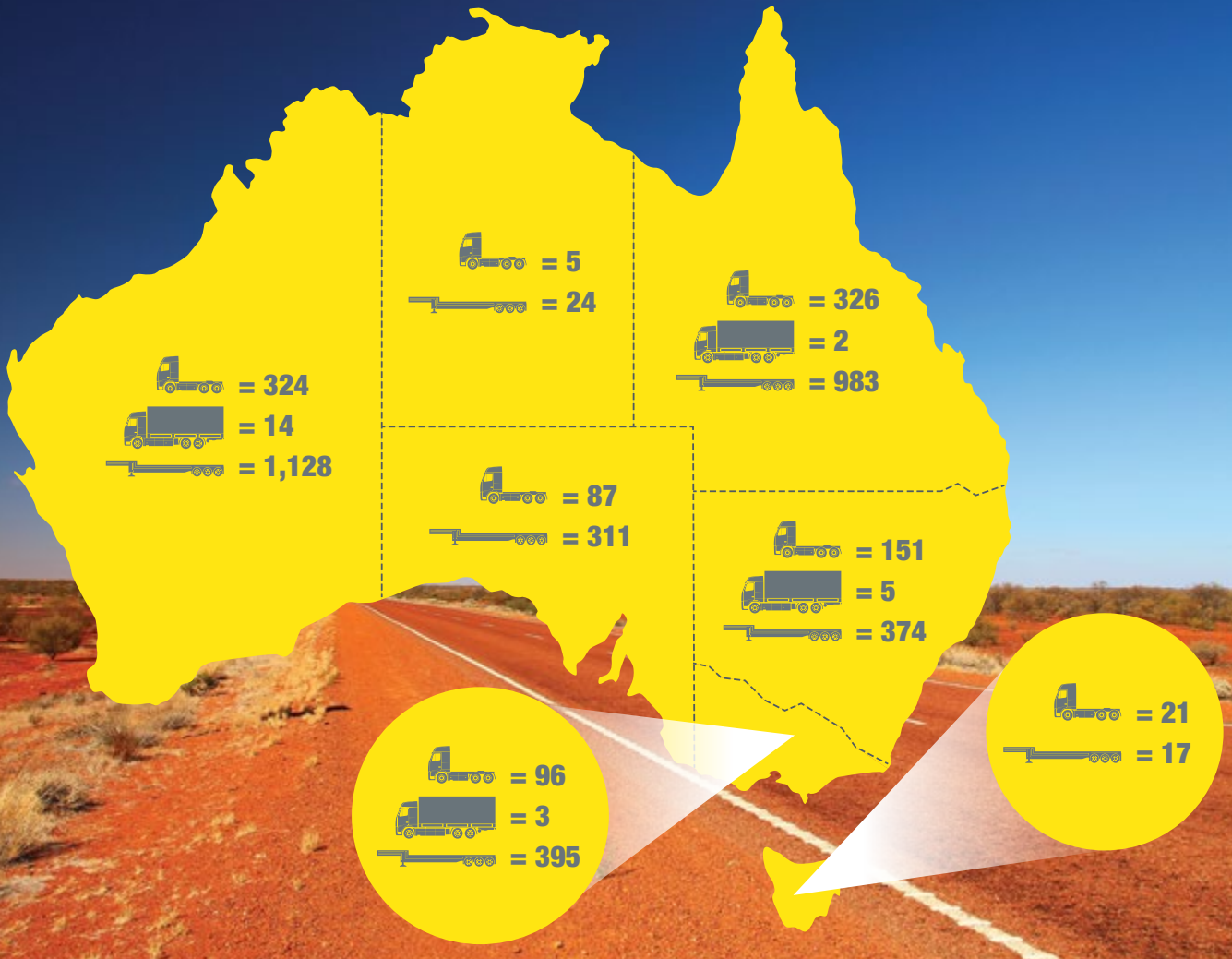
Area / Facilities

- Total Area: 80ha
- Reefer Stacking Capacity (TEUs): 20
- Lay Down Area: 25,000m²
- 3 Undercover Storage: 8,000m² total.



Qube Transport

Qube operates 900+ prime movers and an extensive range of trailers across all of Australia's key ports, quickly and effectively, to move cargo from port to warehouses, retail stores, or directly to the customer. Wharf cartage services combined with live track and trace via our outstanding IT system capabilities capture and record every freight movement, providing an integrated end-to-end solution for our clients.



QUBE NATIONAL TRANSPORT ASSETS				
State	Prime Mover	Rigid Truck	Trailer	Total Number
New South Wales	151	5	374	530
Northern Territory	5	0	24	29
Queensland	326	2	983	1,311
South Australia	87	0	311	398
Tasmania	21	0	17	38
Victoria	96	3	395	494
Western Australia	324	14	1,128	1,466
Total	1,010	24	3,232	4,266

National Fleet Monitoring Centre (FMC)

Qube has ongoing implementation of safety initiatives and innovations throughout our business divisions which seek to further ensure safe and efficient operations. Qube is continuously looking for innovative ways to increase efficiency and provide cost savings to our customers.

Qube's Fleet Monitoring Centre (FMC) provides live 24/7 monitoring of Qube's national fleet. The FMC analysts utilise the in-vehicle management system (IVMS) platform, Hawkeye, supply chain management interface platform, Connect, Driver Safety System (DSS), MT Data and Qube's safety, compliance reporting incident management system (INX) in real time to remotely monitor, rectify and report on events including:

- Fatigue and distraction
- Harsh driving, speeding and excessive idling
- Fuel burn, cycle times and bottlenecks
- Payloads and fleet utilisation
- Maintenance
- Inappropriate employee behaviour not otherwise mentioned
- Emergency Response, including "man-down pendant alert"
- Incident Response and co-ordination
- Driver licences, inductions, and verification of competency
- MT Data support and service front end
- IAP (self-managed) capability.



Project Heavy Haulage



Heavy haulage is considered a high risk operation due to:

- The safety risk and compliance requirements
- The complexity of the load profile
- The planning requirement for loading, transit and unload operations
- The cost of the goods
- The downstream cost and impact to the project experienced through delays or issues during transport
- The delivery landscape and road access to site locations.

Qube is the current the preferred project heavy haulage service provider for many project and heavy industrial clients and will deliver experienced heavy haulage transport and logistics capabilities.

Heavy Lift Capabilities

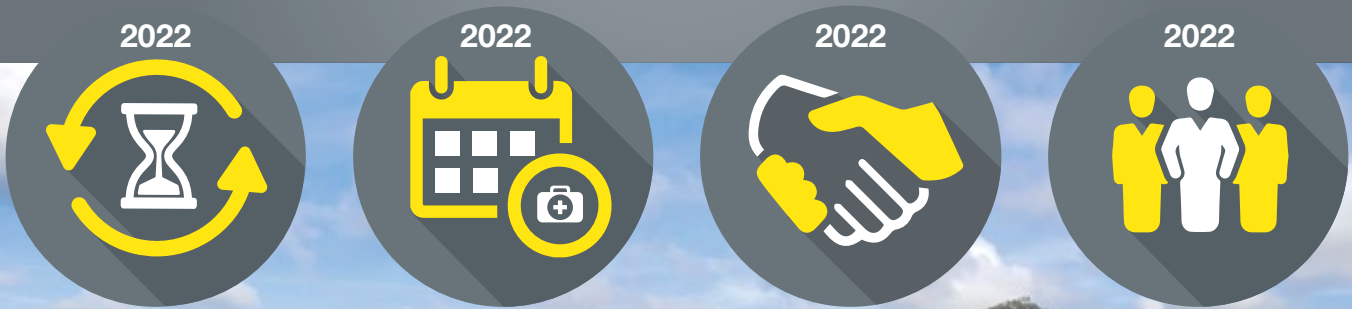
Through the acquisition of the LCR Group, Qube can deliver a heavy lift at port and the delivery site capability.

This added service completes a fully integrated project heavy logistics capability enabling:

- Reduction of total cost
- Streamlining of communications to a single point of contact
- Visibility across the project logistics operation
- Single point of accountability across the delivery operation.



Risk Mitigation and Proven Transition Success



LTIFR
0

TRIFR
0

SAFETY
ENGAGEMENTS
5,836

LEADERSHIP
TOURS
73



Qube’s goal is to ensure a “Zero Harm” safety culture, which reflects our belief in a workplace where risks are managed and the work does not impact on our people’s health and well-being. Our safety systems are closely monitored and we actively participate in programs that create an inclusive and transparent culture which results in minimised SHS incidents and an engaged and productive workforce. This includes Safer Together, of which Qube is a proud member of both the WA/NT and Qld working groups.

Qube has in-depth experience with contract transitions, having successfully delivered and implemented multiple large production and drilling operations for Chevron Australia, Shell Australia, Esso Australia and ConocoPhillips/Santos nationally. Each transition was headed by a best-in-class implementation project team that achieved no incidents or time lost throughout the transition period.



Continuous Improvement – The Qube Innovation Lab

To ensure Qube is continually pushing the boundaries of business improvement, we have designed and implemented, through our Innovation Lab, an in-house continuous improvement portal to allow the centralisation, review, management and tracking of all improvement ideas.

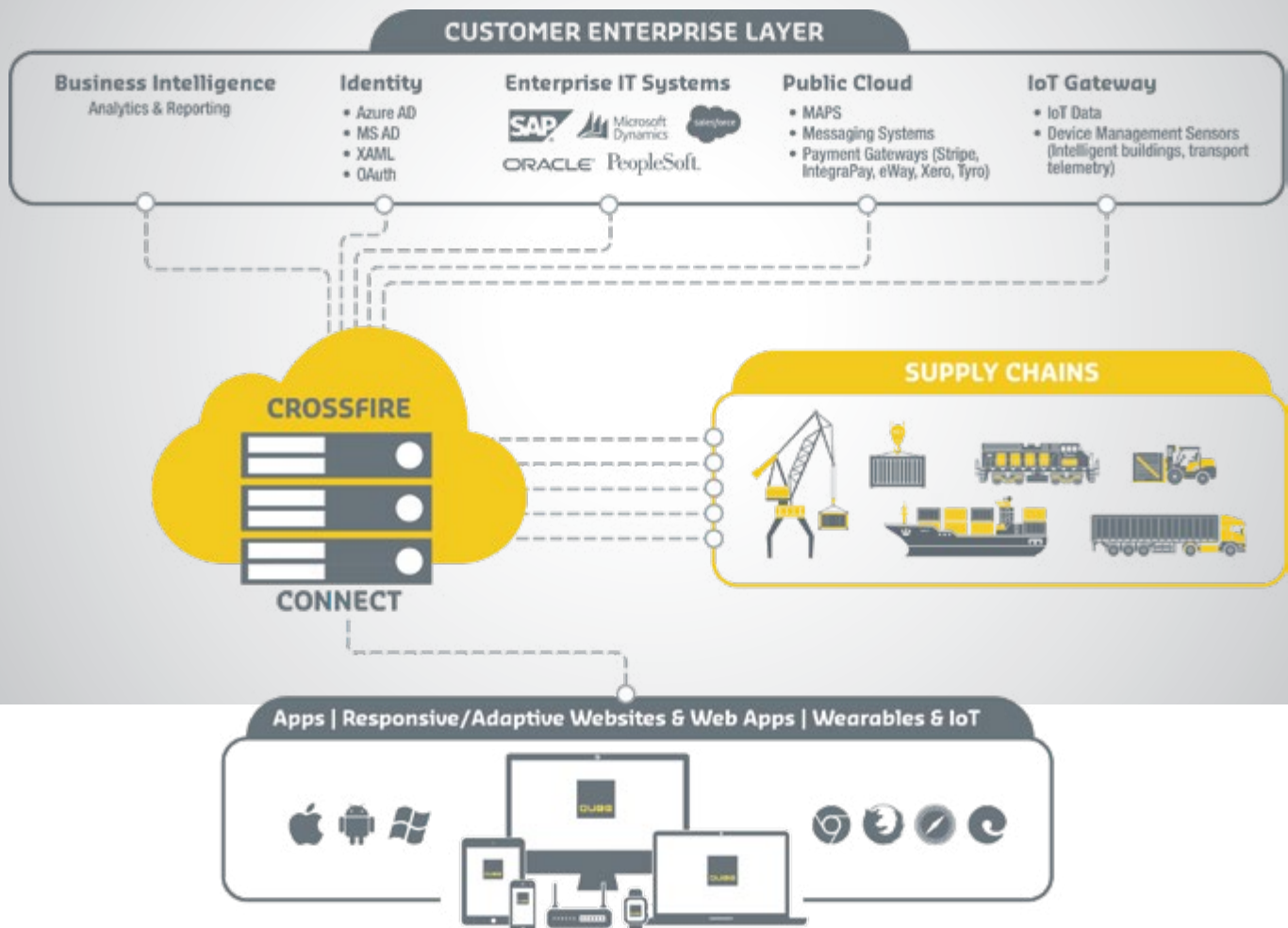
This portal is central to Qube’s approach in ensuring innovation, process, safety and general business improvements are captured, shared and continually implemented, resulting in Qube’s business practices and that of our customers remaining in market leading positions.

The Innovation Lab is accessible by all Qube employees, with all ideas submitted via the improvement portal automatically shared across the entire Qube business to ensure maximum impact.



Qube IT Enterprise Supply Chain Management System

One of Qube's core values is to drive continuous improvement in O&G operations, achieved through our ongoing commitment to investing in leading technology.



In addition to Qube specialising in supply chain logistics, warehousing and technical services, we also recognise the importance of systems and the role that data generated from these plays in improving the efficiency of operating teams.

As such, Qube has committed to establishing and maintaining fully integrated IT and systems offerings which result in the ability to ingest, retain and re-represent data in dashboard format, allowing key stakeholders oversight of business performance.

Qube has dedicated in-house IT teams which specialise in building and deploying customised supply chain ecosystems to represent all critical function data and provide full supply chain visibility.

Environment and Sustainability

These investments have produced the following achievements for the Qube group over the past 12 months:

- A reduction in carbon footprint equals a reduction in operational risk and costs
- Commitment to Zero Harm
- 50% increase in new infrastructure with renewable energy installation
- 8.6% reduction in targeted tCO₂-e per \$M revenue
- 1,140 tonnes of CO₂ per annum carbon offset from Qube's Solar Rollout Project
- 85% of truck fleet is > Euro 5 & 6 standard
- 0 notifiable environmental incidents.



Social Responsibility

The Qube group maintains our social licence to operate by managing community expectations, responding to community concerns and supporting the communities we work in. As a result, over the past 12 months Qube has:

- Continued social investment in the communities in which we operate
- Introduced community and charity special paid leave
- Seen a 0.5% year on year increase in representation of women in our Australian operations
- Implemented proactive health and well-being initiatives
- Encouraged workforce diversity and the next generation.

Proven Experience

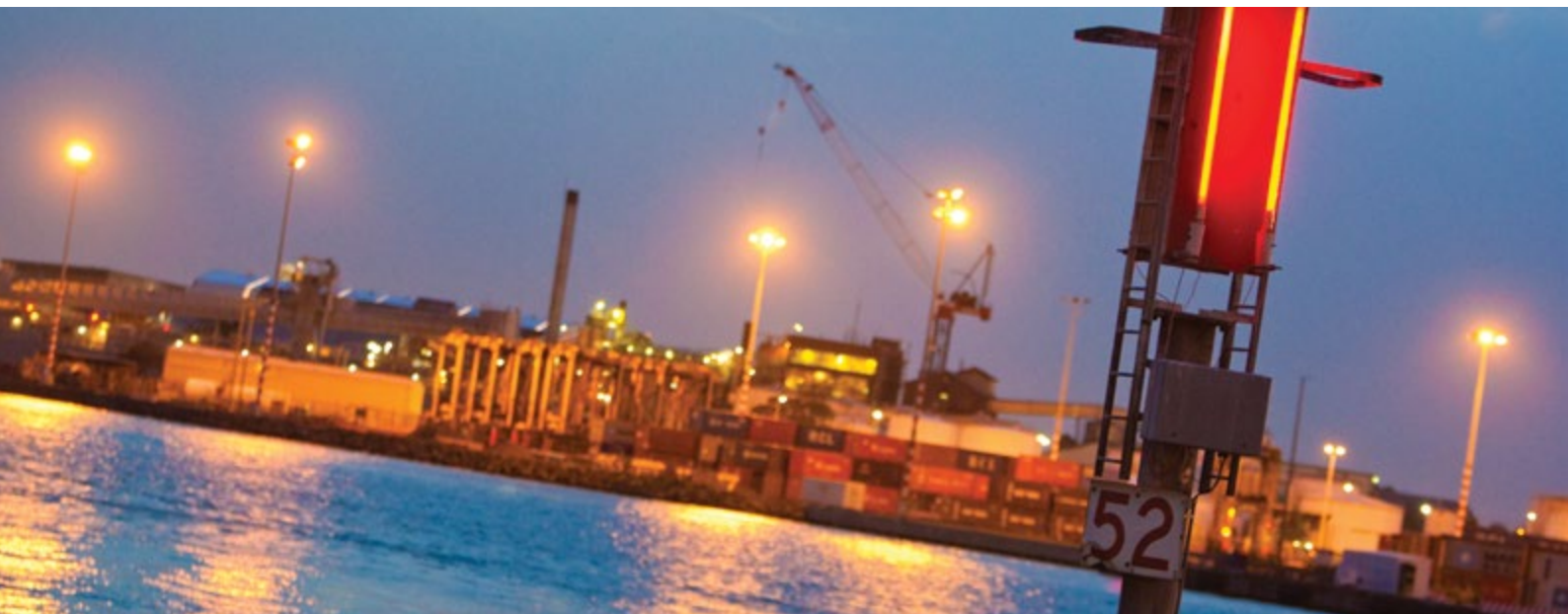
Support to HMAS Canberra's Fiji Deployment

Qube was able to support HMAS Canberra's recent short notice deployment to Fiji. HMAS Canberra, one of two new landing helicopter dock (LHD) ships in the Royal Australian Navy (RAN), was due to undertake its first call to Brisbane when it was committed to Operation FIJI ASSIST 2016 in the aftermath of Cyclone Winston.

To better facilitate the loading of personnel and equipment, Qube was able to organise a berth at Qube's Fisherman Island facility. The Qube facility had the available space to marshal embarking personnel and critical supplies, and this support operation took place over a concentrated 48 hours.

Plywood, roof sheeting and cement bags were among the items received for subsequent loading on HMAS Canberra. Qube managed the loading of aid containers received at Fisherman Island that required lifting onto the flight deck.





Assisting HMAS Canberra to prepare for deployment required the professional attention our commercial customers receive and this commitment was recognised by the ship:

“

Greg,

Thanks very much for the well wishes and all of the assistance you and your team at Qube provided HMAS Canberra.

The support provided has allowed us a seamless transition into our short-notice deployment. Your flexibility in reacting to the multiple needs of the ship was key to the success of our visit.

I will pass your words onto my commanders and I will look forward to working with you again in the future!

Regards,

CAPT

Amphibious Operations Captain, HMAS Canberra

”

Logistics Support to US DoD POW/MIA Accounting Agency (DPAA)

In April 2016, Qube Government Services was awarded a contract to support DPAA on a mission to recover missing personnel from a recently located downed WWII bomber in the swamp in Cape Wom, Wewak, in East Sepik Province, Papua New Guinea.



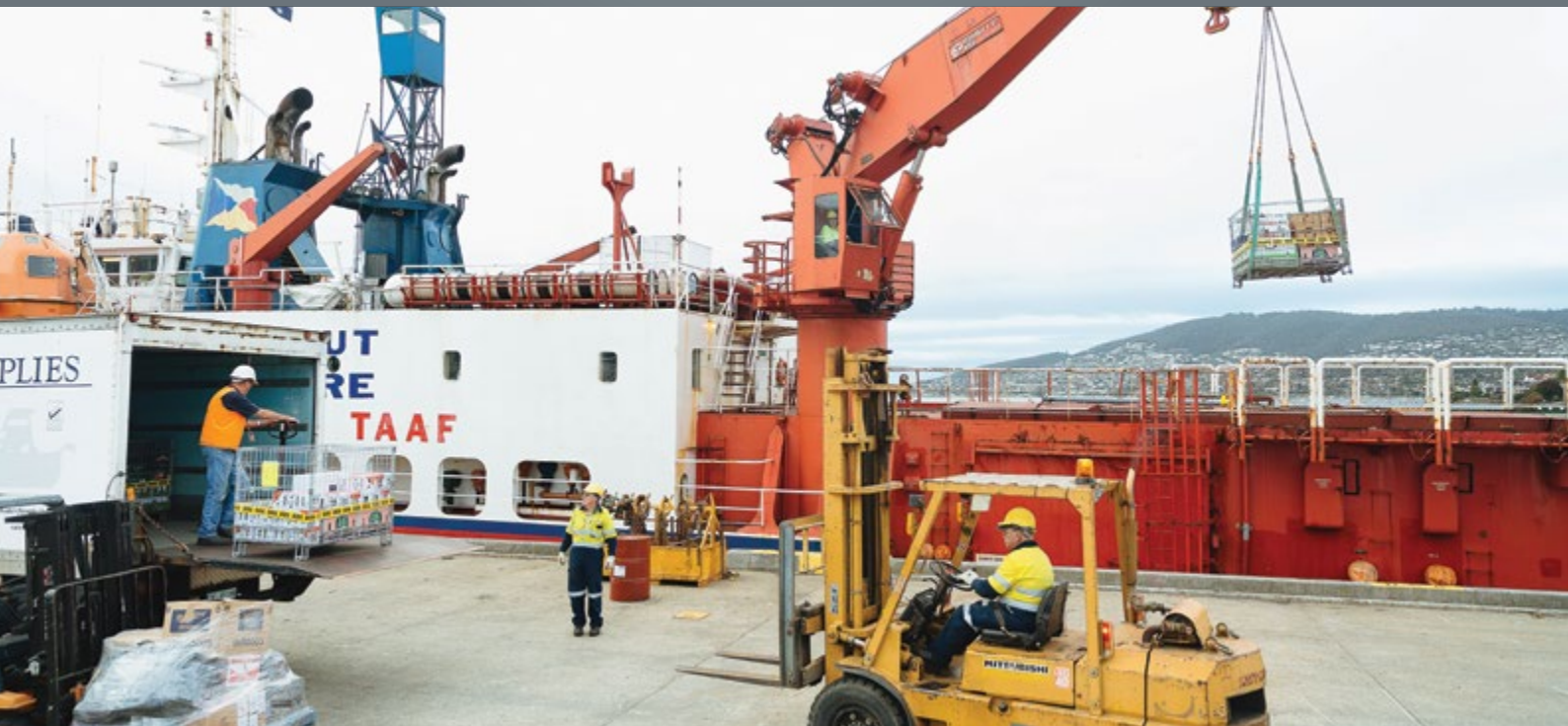
Qube met with the DPAA mission team leader in Wewak on 3rd April 2016 to confirm the mission requirements and scope of works, and a site recce was conducted the following day. The crash site is approximately 600m from the nearest roadway, situated in dense jungle and swamp.

Qube was tasked with arranging and managing a local labour force of 50 workers, and providing equipment (PPE and tools), 24/7 on-site security, and material handling equipment to assist with the loading and transportation of DPAA's equipment.

Summary

Qube Government Services, part of the broader Qube Holdings Ltd, is capable of:

- Operating in over 50 ports and 150 locations throughout Australia, New Zealand and South East Asia
- Coordination from a centrally-located Singapore office
- Providing specialist on-ground support
- Identifying key contract managers able to support multi-ship, multi-port deployments
- Tailoring accounting and reporting systems to ensure timely invoicing and 360° reporting
- Ensuring a low risk, value for money, and fully integrated service





Contact Details

Martin Flower – Government Services Manager, Qube Government Services
martin.flower@qube.com.au
mob. +61 403 076 137

James Espie – Logistics Manager, Qube Government Services
james.espie@qube.com.au
mob. +61 403 052 345